

USD US Growth Fund

An investment fund option for variable life insurance products of **The Manufacturers Life Insurance Co., (Phils), Inc.**

Investment Objective

The Fund aims to maximize total return by investing substantially all of its assets in one or more equity collective investment schemes which aims to achieve capital growth through an underlying strategy that invests primarily in a portfolio of equity and equity related securities of North American companies.

Fund Information

| | | | |
|--------------------------------------|--|------------------------------------|-----------------------------------|
| Inception Date May 2021 | Fund Size USD 5.71 million | Fund Currency US dollar | Dealing/Valuation Daily |
| Price (NAV/unit) USD 1.033 | Management Fee 2.25% per annum | Bloomberg Ticker PHEQUUS | |

Performance Return (December 31, 2023)

| USD US Growth Fund (net of management fee) | 1 Month | YTD | 1 Year | 3 Years | 5 Years | Since Inception |
|---|---------|--------|--------|---------|---------|-----------------|
| Absolute | 5.52% | 30.59% | 30.59% | n.a. | n.a. | 3.30% |
| Annualized | n.a. | n.a. | 30.59% | n.a. | n.a. | 1.24% |

Past performance is not an indication of future results. Information about the portfolio's holdings, asset allocation, or country diversification is historical and is not an indication of future portfolio composition, which will vary.

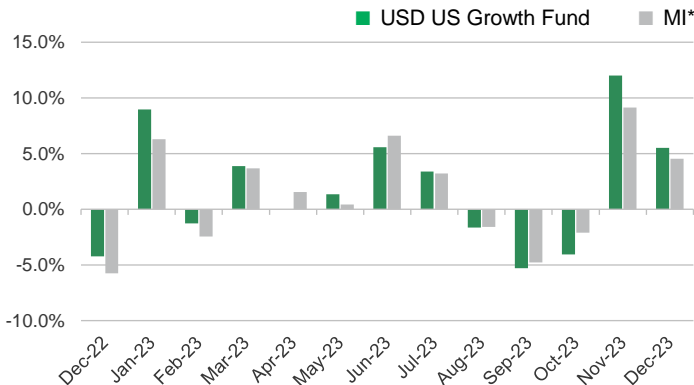
Monthly Net Asset Value per Unit



Top Five Holdings

| | |
|----------------------------|-------|
| Amazon.com, Inc. | 7.49% |
| Apple Inc. | 6.98% |
| Alphabet Inc. Class A | 5.51% |
| Lennar Corporation Class A | 4.49% |
| Microsoft Corporation | 4.14% |

Monthly Performance



*Market Indicator = S&P 500 Index

This is not a deposit product. Earnings are not assured and principal amount invested is exposed to risk of loss. This product cannot be sold to you unless its benefits and risks have been thoroughly explained. If you do not fully understand this product, do not purchase or invest in it.

Portfolio Breakdown

Asset Allocation (at Market Value)



MANULIFE AMC GRW EQ FDR FD-NO FEE SHS 100.00%

USD US Growth Fund

Market Review

In December, the US stock market rose amid mounting optimism that the US Federal Reserve Board (Fed) was on track to curb inflation without triggering a sharp economic downturn. Investors were further encouraged by the US Fed's signal that it would likely cut interest rates in 2024, although it left the possibility of further hikes open, if necessary. After nine consecutive weeks of gains, the broad-based Standard & Poor's 500 Index finished the year near a record high, with the biggest advance for the month coming from the interest-rate sensitive real estate sector. The industrial and consumer discretionary sectors also posted sizable gains. Conversely, energy and utilities were laggards.

Outlook

Looking ahead, we expect lower interest rates to be accommodative for economic growth. In addition, inflation appears to be coming down and unemployment remains low. However, geopolitical challenges and the upcoming US Presidential Elections could pose challenges to investor sentiment. Given this backdrop, we plan to stay disciplined around valuation. During the period, we took profits in sectors, such as information technology, that had rallied, and added to sectors that had lagged, including healthcare and consumer staples.

The investment fund option for The Manufacturers Life Insurance Company's variable life insurance product is managed by Manulife Investment Management and Trust Corporation.

The Fund mentioned in this document is specific to variable life insurance contracts and is not considered a mutual fund. Yields depend on interest and foreign exchange rate levels, both of which may fluctuate. Other factors that affect yield include changes in the credit standing of the issuers and changes in the value of the stocks and dividends received. Further, investments of the Fund may provide that their values be determined based on prices or yields of other securities, instruments or foreign currencies, and such provisions may result in negative fluctuations in the value of these investments and, in turn, the Fund's yields. Thus, the performance of the separate account(s) is not guaranteed and the value of the policy could be less than the capital invested. THE VARIABLE LIFE POLICYHOLDER SHALL BEAR ALL INVESTMENT RISKS. Past performance of the Fund is not necessarily indicative of future performance. Yields are not guaranteed.

The information and/or analysis contained in this material have been compiled or arrived at from sources believed to be reliable but The Manufacturers Life Insurance Company ("Manulife Philippines") does not make any representation as to their accuracy, correctness, usefulness or completeness and does not accept liability for any loss arising from the use hereof or the information and/or analysis contained herein. Information about the portfolio's holdings, asset allocation, or country diversification is historical and is not an indication of future portfolio composition, which will vary. Neither Manulife Philippines or its affiliates, nor any of their directors, officers or employees shall assume any liability or responsibility for any direct or indirect loss or damage or any other consequence of any person acting or not acting in reliance on the information contained herein.

The information in this material may contain projections or other forward-looking statements regarding future events, targets, management discipline or other expectations, and is only as current as of the date indicated. There is no assurance that such events will occur, and may be significantly different than that shown here. The information in this material including statements concerning financial market trends, are based on current market conditions, which will fluctuate and may be superseded by subsequent market events or for other reasons. This material was prepared solely for informational purposes and does not constitute a recommendation, professional advice, an offer, solicitation or an invitation by or on behalf of Manulife Philippines to any person to buy or sell any security. This material should not be viewed as a current or past recommendation or a solicitation of an offer to buy or sell any investment products or to adopt any investment strategy. Nothing in this material constitutes investment, legal, accounting or tax advice, or a representation that any investment or strategy is suitable or appropriate to your individual circumstances, or otherwise constitutes a personal recommendation to you. Past performance is not an indication of future results.

Manulife and the block design are registered service marks and trademarks of The Manufacturers Life Insurance Company and used by it and its affiliates including Manulife Financial Corporation.