

USD Global Health Fund

An investment fund option for variable life insurance products of **The Manufacturers Life Insurance Co., (Phils), Inc.**

Investment Objective

The Fund aims to maximize total return by investing substantially all of its assets in one or more collective investment schemes which aims to provide medium to long term capital growth by investing mainly in equity and equity-related securities in health care and related industries globally, which are listed on any stock exchange. The Target Fund may invest in companies which derive a significant portion of their earnings from medical and pharmaceutical products and services. The remaining assets may include bonds and deposits.

Fund Information

Inception Date May 2022	Fund Size USD 648.60 thousand	Fund Currency US dollar	Dealing/Valuation Daily
Price (NAV/unit) USD 1.061	Management Fee 2.25% per annum	Bloomberg Ticker PHEQUUH	

Performance Return (August 31, 2025)

USD Global Health Fund (net of management fee)	1 Month	YTD	1 Year	3 Years	5 Years	Since Inception
Absolute	2.31%	2.51%	-12.39%	9.95%	n.a.	6.10%
Annualized	n.a.	n.a.	-12.39%	3.21%	n.a.	1.83%

Past performance is not an indication of future results. Information about the portfolio's holdings, asset allocation, or country diversification is historical and is not an indication of future portfolio composition, which will vary.

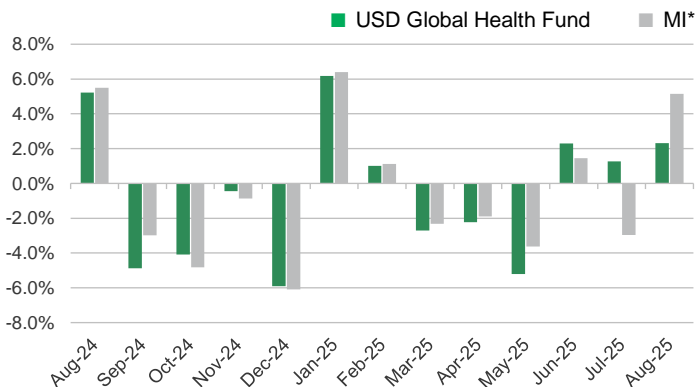
Monthly Net Asset Value per Unit



Top Five Holdings

Eli Lilly and Company	9.06%
AstraZeneca PLC	6.26%
Johnson & Johnson	5.60%
AbbVie, Inc.	5.44%
Stryker Corporation	5.30%

Monthly Performance



*100% MSCI World/Healthcare NR USD index

This is not a deposit product. Earnings are not assured and principal amount invested is exposed to risk of loss. This product cannot be sold to you unless its benefits and risks have been thoroughly explained. If you do not fully understand this product, do not purchase or invest in it.

Portfolio Breakdown

Asset Allocation (at Market Value)



USD Global Health Fund

Market Review

The world equity markets performed well in August, as generally upbeat news flow helped support investor sentiment. US Federal Reserve (Fed) Chairman Jerome Powell indicated that the central bank was likely to cut interest rates in September, fueling optimism that the global easing cycle would continue. In addition, positive data regarding growth, inflation, and corporate earnings supported an emerging consensus that US tariffs will largely prove to be a non-issue for the markets. Together, these factors helped propel the major world stock indexes to a series of all-time highs. Japan performed particularly well, with the Nikkei 225 Index topping 43,000 for the first time behind declining trade concerns and robust demand from foreign investors. European equities also continued to move higher despite political instability in France. US stocks, while positive, lagged somewhat following their meaningful performance over the previous four months. China was a notable bright spot in the emerging markets. The geographic region's indexes benefited from favorable liquidity conditions, strong interest among local investors, and optimism about the Chinese tech sector's growing presence in the development of artificial intelligence.

The healthcare sector increased during the period and performed well, as measured by the MSCI World Index. The healthcare providers and services and pharmaceuticals sub-sectors performed well, while the biotechnology, healthcare equipment and supplies, and life sciences tools and services sub-sectors underperformed.

Outlook

We believe that the defensive characteristics of the sector coupled with solid organic growth in select companies should provide strong performance over a full market cycle. In particular, the COVID-19 pandemic has created structural changes within healthcare that has facilitated enhanced investment opportunities across select segments of the sector. We expect mergers and acquisitions to remain abundant as healthcare companies with strong balance sheets utilize excess capital to expand pipeline and product offerings.

Recent volatility in the healthcare sector following the US presidential election has been noteworthy. In particular, uncertainty surrounding president-elect Trump's nominees for important healthcare administrative roles, including confirmations of Secretary of Health and Human Services (HHS), Commissioner of the Food and Drug Administration (FDA), and Administrator of Centers for Medicare & Medicaid Services (CMS). Concerns over longstanding US policies regarding vaccine availability, FDA regulatory approval pathways and CMS's Medicare/Medicaid reimbursement frameworks have weighed on the sector. We remain comfortable that practical changes to longstanding policies in these agencies will be incremental at best. We expect that legislative oversight from the US Congress, along with meaningful input from corporations governed by such policies and the broader scientific community, can and should curtail any dramatic changes in this regard.

From a portfolio perspective, we believe that we are very well positioned to avoid undue exposure to any of these potential headwinds, including the possible financial implications of recently proposed tariffs. Of note, we were pleased to see that the new US tariff proposals excluded explicit tariffs on biopharmaceutical products. We anticipate that new HHS secretary's primary focus will likely be on issues of food safety and vaccination policy. Fortunately, our portfolio has been and remains under indexed to these prospective issues.

In addition, the healthcare sector has experienced modest volatility following the July passage of the US Reconciliation Bill (One Big Beautiful Bill). While this law facilitates meaningful cuts (~USD1.2 trillion over 10 years) in US government healthcare spending, these cuts are primarily directed at Medicaid and ACA (Affordable Care Act a.k.a. Obama Care) insurance programs. Fortunately, coming into the year, our portfolio holdings were well positioned to minimize potential downside implications from these cuts. More specifically, we had maintained limited if any exposure to the Medicaid and ACA insurers, as well as limited exposure to publicly traded hospital companies. One positive ramification of the One Big Beautiful Bill worth noting was a carve out provision protecting rare and orphan drugs from potential price cuts under Medicare negotiations. We had maintained and continue to find interesting investment opportunities in these orphan drug companies.

Within biopharmaceuticals, we are focused on companies with best-in-class product portfolios serving patients in disease states with inelastic demand. Our previous findings related to structural changes in the healthcare industry support the urgency to effectively manage other pre-existing disease states (cancer, metabolic syndrome, asthma, and other immunologic disorders), which our research suggests pre-dispose these comorbid patients to higher morbidity and mortality post-COVID. Accordingly, this has led us to favor biopharmaceutical companies over-indexed to cardiovascular disease, neurological disease, and diabetes.

Fundamentals within select areas of both the healthcare equipment and supplies and life science tools and services industries remain attractive. Specifically, we continue to favor select companies working in the fields of electrophysiology and hypertension that we believe hold great promise in underserved populations with substantial unmet medical needs. We expect several of these companies will continue to generate above market returns as the incremental research, capex, and pipeline investments they have implemented continue to reach fruition in the coming quarters and years.

Within the healthcare providers and services industry, we continue to see significant value in select supply chain companies, specifically pharmaceutical wholesalers. We expect these companies to see improving margins from favorable modifications to patient co-pay obligations, driving elevated prescription volumes. We have also modified our positioning in select healthcare insurers given elevated drug utilization and higher patient morbidity in the Medicare population. In addition, we continue to maintain an underweight exposure to Medicaid and ACA insurers as previously discussed.

Overall, we continue to emphasize a bottom-up fundamental research process informed by our assessment of emerging scientific and medical trends, coupled with a thorough intrinsic valuation analysis. This approach should ensure that our allocation of capital is focused on companies tackling important unmet medical needs, pursuing underappreciated market opportunities, and/or demonstrating an ability to bend the healthcare cost curve.

USD Global Health Fund

The investment fund option for The Manufacturers Life Insurance Company's variable life insurance product is managed by Manulife Investment Management and Trust Corporation.

The Fund mentioned in this document is specific to variable life insurance contracts and is not considered a mutual fund. Yields depend on interest and foreign exchange rate levels, both of which may fluctuate. Other factors that affect yield include changes in the credit standing of the issuers and changes in the value of the stocks and dividends received. Further, investments of the Fund may provide that their values be determined based on prices or yields of other securities, instruments or foreign currencies, and such provisions may result in negative fluctuations in the value of these investments and, in turn, the Fund's yields. Thus, the performance of the separate account(s) is not guaranteed and the value of the policy could be less than the capital invested. THE VARIABLE LIFE POLICYHOLDER SHALL BEAR ALL INVESTMENT RISKS. Past performance of the Fund is not necessarily indicative of future performance. Yields are not guaranteed.

The information and/or analysis contained in this material have been compiled or arrived at from sources believed to be reliable but The Manufacturers Life Insurance Company ("Manulife Philippines") does not make any representation as to their accuracy, correctness, usefulness or completeness and does not accept liability for any loss arising from the use hereof or the information and/or analysis contained herein. Information about the portfolio's holdings, asset allocation, or country diversification is historical and is not an indication of future portfolio composition, which will vary. Neither Manulife Philippines or its affiliates, nor any of their directors, officers or employees shall assume any liability or responsibility for any direct or indirect loss or damage or any other consequence of any person acting or not acting in reliance on the information contained herein.

The information in this material may contain projections or other forward-looking statements regarding future events, targets, management discipline or other expectations, and is only as current as of the date indicated. There is no assurance that such events will occur, and may be significantly different than that shown here. The information in this material including statements concerning financial market trends, are based on current market conditions, which will fluctuate and may be superseded by subsequent market events or for other reasons. This material was prepared solely for informational purposes and does not constitute a recommendation, professional advice, an offer, solicitation or an invitation by or on behalf of Manulife Philippines to any person to buy or sell any security. This material should not be viewed as a current or past recommendation or a solicitation of an offer to buy or sell any investment products or to adopt any investment strategy. Nothing in this material constitutes investment, legal, accounting or tax advice, or a representation that any investment or strategy is suitable or appropriate to your individual circumstances, or otherwise constitutes a personal recommendation to you. Past performance is not an indication of future results.

Manulife and the block design are registered service marks and trademarks of The Manufacturers Life Insurance Company and used by it and its affiliates including Manulife Financial Corporation.