

# USD Global Health Fund

An investment fund option for variable life insurance products of **The Manufacturers Life Insurance Co., (Phils), Inc.**

## Investment Objective

The Fund aims to maximize total return by investing substantially all of its assets in one or more collective investment schemes which aims to provide medium to long term capital growth by investing mainly in equity and equity-related securities in health care and related industries globally, which are listed on any stock exchange. The Target Fund may invest in companies which derive a significant portion of their earnings from medical and pharmaceutical products and services. The remaining assets may include bonds and deposits.

## Fund Information

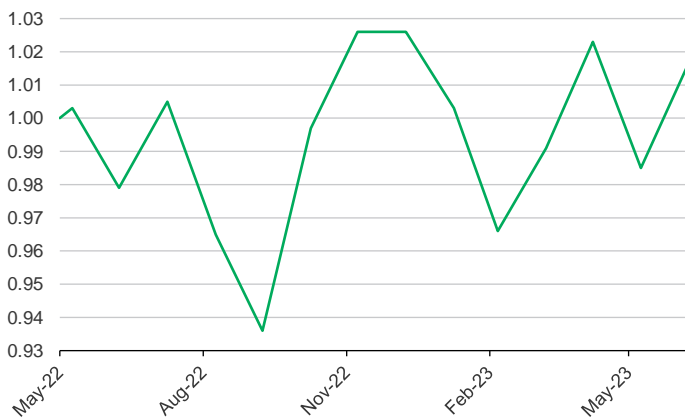
<b>Inception Date</b> May 2022	<b>Fund Size</b> USD 250.22 thousand	<b>Fund Currency</b> US dollar	<b>Dealing/Valuation</b> Daily
<b>Price (NAV/unit)</b> USD 1.016	<b>Management Fee</b> 2.25% per annum	<b>Bloomberg Ticker</b> PHEQUUH	

## Performance Return (June 30, 2023)

USD Global Health Fund (net of management fee)	1 Month	YTD	1 Year	3 Years	5 Years	Since Inception
Absolute	3.15%	-0.97%	3.78%	n.a.	n.a.	1.60%
Annualized	n.a.	n.a.	3.78%	n.a.	n.a.	1.45%

*Past performance is not an indication of future results. Information about the portfolio's holdings, asset allocation, or country diversification is historical and is not an indication of future portfolio composition, which will vary.*

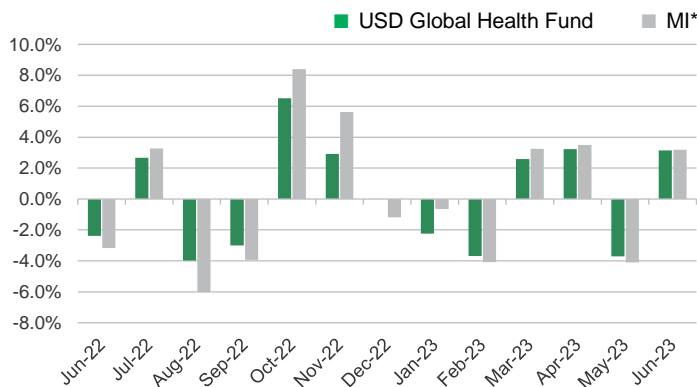
## Monthly Net Asset Value per Unit



## Top Five Holdings

Eli Lilly and Company	9.01%
UnitedHealth Group Incorporated	6.70%
Novo Nordisk A/S Class B	5.76%
Merck & Co., Inc.	5.29%
AstraZeneca PLC	5.23%

## Monthly Performance

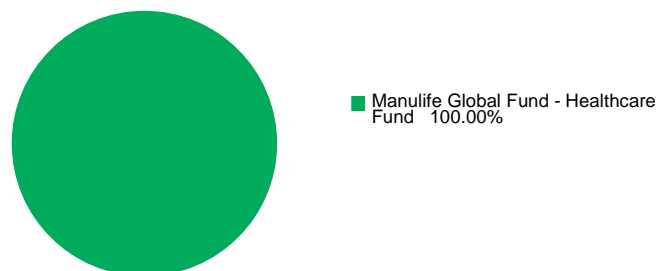


\*100% MSCI World/Healthcare NR USD index

*This is not a deposit product. Earnings are not assured and principal amount invested is exposed to risk of loss. This product cannot be sold to you unless its benefits and risks have been thoroughly explained. If you do not fully understand this product, do not purchase or invest in it.*

## Portfolio Breakdown

### Asset Allocation (at Market Value)



# USD Global Health Fund

## Market Review

World equity markets produced strong, broad-based returns in June, adding to their gains of the previous five months. Investor sentiment remained upbeat throughout the course of the month. Global economic growth, whilst slowing, stayed in positive territory. The markets have been anticipating a recession for over a year on expectations that the lagged effect of interest-rate hikes would eventually take hold. With a sharp slowdown yet to materialise, however, the case for a “soft landing” grew stronger. Investors also appeared optimistic that although central banks continued to raise interest rates, the current tightening cycle appears likely to conclude before year-end. Not least, the continued excitement surrounding the potential for artificial intelligence (AI) fuelled a further rally in mega-cap technology stocks. Notably, market leadership began to broaden out in June with participation from the value style, economically sensitive companies, and small- to mid-cap stock.

The health care sector advanced during the period but did not keep pace with global markets. The healthcare equipment & supplies led all sub-sectors and performed ahead of the overall sector, whilst the biotechnology sub-sector slightly declined.

## Outlook

We believe exposure to the health care sector offers the potential for strong long-term performance. In particular, the pandemic has created structural changes within healthcare that provides enhanced investment opportunities across select segments of the sector. We expect mergers and acquisitions activity to remain abundant as healthcare companies with strong balance sheets utilise excess capital to expand product offerings. We continue to deploy our bottom-up fundamental investment process informed by assessment of emerging scientific and medical trends coupled with our intrinsic valuation analysis. This approach should ensure that our allocation of capital is focused on companies tackling important unmet medical needs, pursuing underappreciated market opportunities, and/or demonstrating an ability to bend the healthcare cost curve.

Within the biopharmaceuticals sub-sector, we are focused on companies with best-in-class product portfolios serving patients in disease states with inelastic demand. Our aforementioned findings related to structural changes in the healthcare industry support the urgency to effectively manage other pre-existing disease states (cancer, metabolic syndrome, asthma, and other immunologic disorders) which our research suggests pre-dispose these comorbid patients to higher morbidity and mortality post-pandemic. Accordingly, this has led us to favour biopharmaceutical companies over-indexed to cardiovascular disease, Alzheimer’s disease and diabetes.

Fundamentals within specific pockets of both the health care equipment & supplies and life science tools & services industries remain attractive. Specifically, we believe select companies will continue to reap the benefits of the excess cashflows generated from the pandemic testing consistent with its emerging endemic state. We believe several of these companies will generate above market returns as the incremental research, capex and pipeline investments they have implemented reach fruition in the coming quarters and years.

Within the health care providers & services industry, we see value in select supply chain companies, specifically pharmaceutical wholesalers. We expect these companies to see improving margins from accelerating drug inflation and continued recovery in prescription volumes. We have also maintained our positioning in select healthcare insurers commensurate with improved profit profiles associated with the pandemic induced reduction in office visits and surgeries in the Medicare population.

Overall, we believe that the defensive characteristics of the sector coupled with solid organic growth in select companies should provide strong performance over a full market cycle.

---

The investment fund option for The Manufacturers Life Insurance Company’s variable life insurance product is managed by Manulife Investment Management and Trust Corporation.

The Fund mentioned in this document is specific to variable life insurance contracts and is not considered a mutual fund. Yields depend on interest and foreign exchange rate levels, both of which may fluctuate. Other factors that affect yield include changes in the credit standing of the issuers and changes in the value of the stocks and dividends received. Further, investments of the Fund may provide that their values be determined based on prices or yields of other securities, instruments or foreign currencies, and such provisions may result in negative fluctuations in the value of these investments and, in turn, the Fund’s yields. Thus, the performance of the separate account(s) is not guaranteed and the value of the policy could be less than the capital invested. THE VARIABLE LIFE POLICYHOLDER SHALL BEAR ALL INVESTMENT RISKS. Past performance of the Fund is not necessarily indicative of future performance. Yields are not guaranteed.

The information and/or analysis contained in this material have been compiled or arrived at from sources believed to be reliable but The Manufacturers Life Insurance Company (“Manulife Philippines”) does not make any representation as to their accuracy, correctness, usefulness or completeness and does not accept liability for any loss arising from the use hereof or the information and/or analysis contained herein. Information about the portfolio’s holdings, asset allocation, or country diversification is historical and is not an indication of future portfolio composition, which will vary. Neither Manulife Philippines or its affiliates, nor any of their directors, officers or employees shall assume any liability or responsibility for any direct or indirect loss or damage or any other consequence of any person acting or not acting in reliance on the information contained herein.

The information in this material may contain projections or other forward-looking statements regarding future events, targets, management discipline or other expectations, and is only as current as of the date indicated. There is no assurance that such events will occur, and may be significantly different than that shown here. The information in this material including statements concerning financial market trends, are based on current market conditions, which will fluctuate and may be superseded by subsequent market events or for other reasons. This material was prepared solely for informational purposes and does not constitute a recommendation, professional advice, an offer, solicitation or an invitation by or on behalf of Manulife Philippines to any person to buy or sell any security. This material should not be viewed as a current or past recommendation or a solicitation of an offer to buy or sell any investment products or to adopt any investment strategy. Nothing in this material constitutes investment, legal, accounting or tax advice, or a representation that any investment or strategy is suitable or appropriate to your individual circumstances, or otherwise constitutes a personal recommendation to you. Past performance is not an indication of future results.

Manulife and the block design are registered service marks and trademarks of The Manufacturers Life Insurance Company and used by it and its affiliates including Manulife Financial Corporation.