

USD Global Health Fund

An investment fund option for variable life insurance products of **The Manufacturers Life Insurance Co., (Phils), Inc.**

Investment Objective

The Fund aims to maximize total return by investing substantially all of its assets in one or more collective investment schemes which aims to provide medium to long term capital growth by investing mainly in equity and equity-related securities in health care and related industries globally, which are listed on any stock exchange. The Target Fund may invest in companies which derive a significant portion of their earnings from medical and pharmaceutical products and services. The remaining assets may include bonds and deposits.

Fund Information

Inception Date May 2022	Fund Size USD 639.36 thousand	Fund Currency US dollar	Dealing/Valuation Daily
Price (NAV/unit) USD 1.192	Management Fee 2.25% per annum	Bloomberg Ticker PHEQUUH	

Performance Return (March 31, 2026)

USD Global Health Fund (net of management fee)	1 Month	YTD	1 Year	3 Years	5 Years	Since Inception
Absolute	-7.31%	-3.40%	10.37%	20.28%	n.a.	19.20%
Annualized	n.a.	n.a.	10.37%	6.35%	n.a.	4.66%

Past performance is not an indication of future results. Information about the portfolio's holdings, asset allocation, or country diversification is historical and is not an indication of future portfolio composition, which will vary.

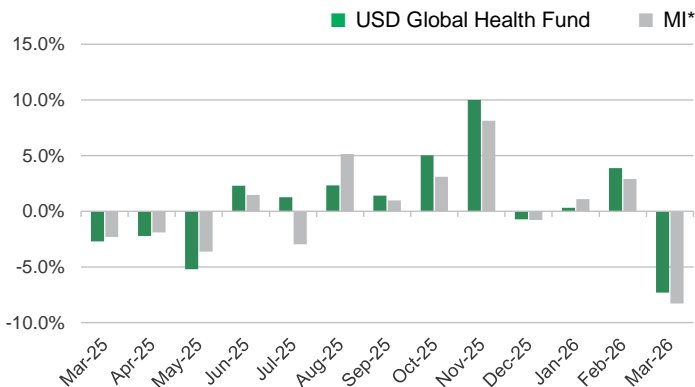
Monthly Net Asset Value per Unit



Top Five Holdings

Eli Lilly and Company	9.13%
Johnson & Johnson	6.99%
AstraZeneca PLC	6.81%
AbbVie, Inc.	5.49%
Amgen Inc.	5.12%

Monthly Performance



*100% MSCI World/Healthcare NR USD index

This is not a deposit product. Earnings are not assured and principal amount invested is exposed to risk of loss. This product cannot be sold to you unless its benefits and risks have been thoroughly explained. If you do not fully understand this product, do not purchase or invest in it.

Portfolio Breakdown

Asset Allocation (at Market Value)



USD Global Health Fund

Market Review

The world equity markets fell sharply in March and registered their largest drawdown since the "Liberation Day" tariff announcement in April 2025. The outbreak of war in Iran, in addition to creating heightened uncertainty about the geopolitical picture, caused a spike in energy prices by disrupting crude oil exports. The markets were further unsettled by concerns about potential shortages of other commodities, such as aluminum, helium, and fertilizer. These developments, in turn, fueled expectations of rising inflation and dampened hopes for continued interest rate cuts by world central banks. The conflict also weighed on the outlook for global growth and corporate earnings, creating an additional headwind for sentiment. Virtually all geographical regions and sectors suffered losses in this environment, as did all market capitalization tiers and both the growth and value styles. The energy sector, which rallied sharply behind the surge in oil prices, was a notable exception. While the market downturn drove the broad-based indexes into the red on a year-to-date (YTD) basis, they continued to have robust 12-month returns as of the end of March.

The health care sector declined during the period and weighed on global markets, as measured by the MSCI World Index. The biotechnology, pharmaceuticals, and life sciences tools & services sub-sectors gained, while the health care equipment & supplies and health care providers & services sub-sectors declined.

Outlook

We believe that the defensive characteristics of the sector, coupled with solid organic growth in select companies, should provide strong returns over a full market cycle. In addition, capital markets access improved dramatically in the back half of 2025 for biopharmaceutical companies, which is a welcome change over the prior two years. We expect M&A activity to remain abundant as healthcare companies with strong balance sheets utilize excess capital to expand their pipeline and product offerings.

Scrutiny continues over regulatory and public policy changes recently implemented by the current US administration, coming into 2026. Concerns regarding the Centers for Medicare & Medicaid Services' (CMS) Medicare/Medicaid reimbursement frameworks persist in the sector. We remain comfortable that practical changes to longstanding policies in these agencies will be incremental at best.

From a portfolio perspective, we believe that we are very well positioned to avoid undue exposure to any of these potential headwinds, including the possible financial implications of recently proposed tariffs. Of note, we were pleased to see that recent negotiated agreements between major global biopharmaceutical companies and the Trump administration have improved product access while excluding explicit tariffs on biopharmaceutical products.

In addition, the healthcare sector has experienced modest volatility following the July passage of the US Reconciliation Bill (One Big Beautiful Bill). While this law facilitates meaningful cuts (~USD1.2 trillion over 10 years) in US government healthcare spending, these cuts are primarily directed at Medicaid and ACA (Affordable Care Act) insurance programs. Our portfolio holdings remain well positioned to minimize potential downside implications from these cuts. More specifically, we continue to maintain limited exposure to the Medicaid and ACA insurers, as well as limited exposure to publicly traded hospital companies. One positive ramification of the One Big Beautiful Bill worth noting was a carve-out provision protecting rare and orphan drugs from potential price cuts under Medicare negotiations. We have maintained and continue to find interesting investment opportunities in these orphan drug companies and have added an additional position here in the month.

Within biopharmaceuticals, we are focused on companies with best-in-class product portfolios serving patients in disease states with inelastic demand. Our previous findings related to structural changes in the healthcare industry support the urgency to effectively manage other pre-existing disease states (cancer, metabolic syndrome, asthma, and other immunologic disorders), which our research suggests predispose these comorbid patients to higher morbidity and mortality post-COVID-19. Accordingly, this has led us to favor biopharmaceutical companies over-indexed to cardiovascular disease, neurological disease, and diabetes.

Fundamentals within select areas of both the health care equipment & supplies and life science tools & services industries remain attractive. Specifically, we continue to favor select companies working in the fields of electrophysiology and hypertension, which we believe hold great promise in underserved populations with substantial unmet medical needs. We expect several of these companies will continue to generate above-market returns as the incremental research, capex, and pipeline investments they have implemented continue to reach fruition in the coming quarters and years.

Within the health care providers & services industry, we continue to see significant value in select supply chain companies, specifically pharmaceutical wholesalers and specialty pharmacy companies. We continue to see these companies generating improved margins from favorable modifications to patient co-pay obligations, driving elevated prescription volumes. In addition, we continue to maintain an underweight exposure to Medicaid, Medicare, and ACA insurers as previously discussed.

Overall, we continue to emphasize a bottom-up fundamental research process informed by our assessment of emerging scientific and medical trends, coupled with a thorough intrinsic valuation analysis. This approach should ensure that our allocation of capital is focused on companies tackling important unmet medical needs, pursuing underappreciated market opportunities, and/or demonstrating an ability to bend the healthcare cost curve.

USD Global Health Fund

The investment fund option for The Manufacturers Life Insurance Company's variable life insurance product is managed by Manulife Investment Management and Trust Corporation.

The Fund mentioned in this document is specific to variable life insurance contracts and is not considered a mutual fund. Yields depend on interest and foreign exchange rate levels, both of which may fluctuate. Other factors that affect yield include changes in the credit standing of the issuers and changes in the value of the stocks and dividends received. Further, investments of the Fund may provide that their values be determined based on prices or yields of other securities, instruments or foreign currencies, and such provisions may result in negative fluctuations in the value of these investments and, in turn, the Fund's yields. Thus, the performance of the separate account(s) is not guaranteed and the value of the policy could be less than the capital invested. THE VARIABLE LIFE POLICYHOLDER SHALL BEAR ALL INVESTMENT RISKS. Past performance of the Fund is not necessarily indicative of future performance. Yields are not guaranteed.

The information and/or analysis contained in this material have been compiled or arrived at from sources believed to be reliable but The Manufacturers Life Insurance Company ("Manulife Philippines") does not make any representation as to their accuracy, correctness, usefulness or completeness and does not accept liability for any loss arising from the use hereof or the information and/or analysis contained herein. Information about the portfolio's holdings, asset allocation, or country diversification is historical and is not an indication of future portfolio composition, which will vary. Neither Manulife Philippines or its affiliates, nor any of their directors, officers or employees shall assume any liability or responsibility for any direct or indirect loss or damage or any other consequence of any person acting or not acting in reliance on the information contained herein.

The information in this material may contain projections or other forward-looking statements regarding future events, targets, management discipline or other expectations, and is only as current as of the date indicated. There is no assurance that such events will occur, and may be significantly different than that shown here. The information in this material including statements concerning financial market trends, are based on current market conditions, which will fluctuate and may be superseded by subsequent market events or for other reasons. This material was prepared solely for informational purposes and does not constitute a recommendation, professional advice, an offer, solicitation or an invitation by or on behalf of Manulife Philippines to any person to buy or sell any security. This material should not be viewed as a current or past recommendation or a solicitation of an offer to buy or sell any investment products or to adopt any investment strategy. Nothing in this material constitutes investment, legal, accounting or tax advice, or a representation that any investment or strategy is suitable or appropriate to your individual circumstances, or otherwise constitutes a personal recommendation to you. Past performance is not an indication of future results.

Manulife and the block design are registered service marks and trademarks of The Manufacturers Life Insurance Company and used by it and its affiliates including Manulife Financial Corporation.