

Peso Target Distribution Fund

An investment fund option for variable life insurance products of **The Manufacturers Life Insurance Co., (Phils), Inc.**

Investment Objective

The Fund aims to provide periodic payouts of up to 3% per annum* while providing the potential for capital appreciation and limiting the risk of capital erosion by investing in a diversified portfolio of fixed income and equity investments based on an active asset allocation strategy.

Fund Information

Inception Date April 2014	Fund Size PHP 1.68 billion	Fund Currency Philippine peso	Dealing/Valuation Daily
Price (NAV/unit) PHP 0.804	Management Fee 2.25% per annum (of which 0.20% will go to the Investment advisor, Manulife Investment Management (HK) Limited.)	Bloomberg Ticker MPPHDIS	

* The 3% per annum payout rate is not guaranteed.

Performance Return (July 31, 2021)

Peso Target Distribution Fund (net of management fee)	1 Month	YTD	1 Year	3 Years	5 Years	Since Inception
Absolute	-3.12%	-4.86%	0.42%	1.13%	-6.76%	-0.04%
Annualized	n.a.	n.a.	0.42%	0.37%	-1.39%	-0.01%

Past performance is not an indication of future results. Information about the portfolio's holdings, asset allocation, or country diversification is historical and is not an indication of future portfolio composition, which will vary.

Monthly Net Asset Value per Unit

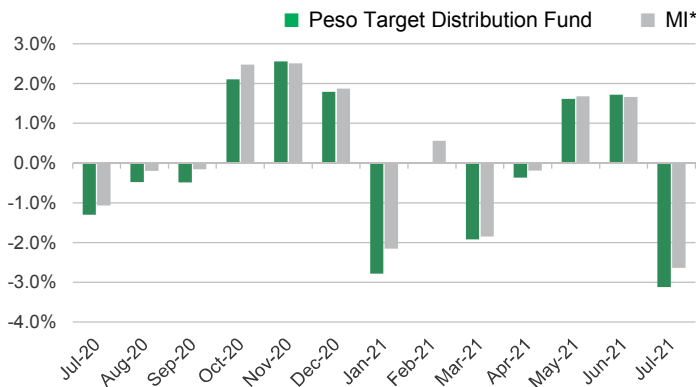


Top Five Holdings

Bond Pool		Short-Term Bond Pool	
FXTN 08/12/25	13.71%	Manulife Stable Income Fund Class I	36.23%
FXTN 03/09/24	10.15%	FXTN 02/11/23	7.96%
FXTN 02/11/23	8.40%	FXTN 04/21/23	7.00%
FXTN 09/09/25	7.94%	FXTN 03/09/24	6.96%
FXTN 03/12/24	6.21%	FXTN 08/11/21	5.67%
Equity Pool			
SM INVESTMENTS CORPORATION			13.40%
Manulife Equity Wealth Fund Class I			10.23%
AYALA LAND INC			9.06%
SM PRIME HOLDINGS INC			8.80%
AYALA CORPORATION			8.62%

Notes:
 FXTN - Fixed Treasury Notes or Peso-denominated debts of the Philippine Government
 RTB - Retail Treasury Bonds of the Philippine Government

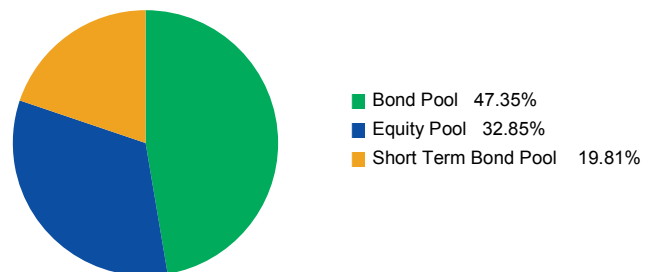
Monthly Performance



*Market Indicator = 30.0% PSEi + 4.9% Markit Iboxx ALBI Philippines Liquid + 44.3% Markit Iboxx ALBI Philippines 1-5 + 20.8% Markit Iboxx ALBI Philippines 1-3

Portfolio Breakdown

Asset Allocation (at Market Value)



As per the fund's Investment Policy Statement, initial subscriptions are invested in fixed 49.2% Bond Pool, 20.8% Short-Term Bond Pool and 30% Equity Pool. The investments of these pools consist of:

- Peso Bond Pool: Peso-denominated bonds of the Republic of the Philippines and term deposits.
- Short Term Bond Pool: Peso-denominated bonds of the Republic of the Philippines with a term of up to three years and term deposits.
- Equity Pool: Various stocks listed on the PSE and term deposits

Peso Target Distribution Fund

Market Review

The PSEi lost 631 points and ended July at 6,270.23 points, down 9.2%. After briefly touching the 7,000-point level in early July, the market reversed course following government's pronouncements that Metro Manila will be back to stricter mobility measures beginning August 6 to contain the spread of the Delta variant. The two-week Enhanced Community Quarantine (ECQ) will restrict dine-in and public transport as well as limit travel, impacting mobility. Contributing further to the market's drop was the peso's continued weakness versus the US dollar. For the month, the peso declined a further 2.4%, and settled above the Php50/US\$ level at P50.006/US\$. Foreign outflows continued in July at \$182 Mil, bringing the YTD total to US\$1.73 Bil.

The country's credit rating outlook was revised to negative from stable by Fitch citing the impact of the pandemic on the economy. It affirmed the country's long-term foreign currency issuer default rating (IDR) at "BBB", a notch above investment grade. The credit rating agency lowered its GDP forecasts to 5% from 6.3% for 2021 while expecting growth to pick up to 6.6% in 2022 and 7.3% in 2023.

Price pressures eased as inflation slowed down to 4.0% in July, sustaining the downtrend seen in the last three months, as various government measures to address food supply shortages started to have an impact. On the fiscal front, the Philippines' budget deficit reached P716 Bil for the first six months and is tracking below the government's target due to underspending.

Concerns on the rise in Covid-19 cases due to the Delta variant has resulted in Metro Manila, including nearby provinces and select cities, to be placed under the Enhanced Community Quarantine (ECQ) for two weeks. ECQ is the strictest category of lockdown and this is the third time since the start of the pandemic that the Philippines is revisiting this category. Moving forward, this lockdown may dampen growth prospects for the Philippines and may keep investor sentiment lukewarm in the near term. The Philippine government targets to vaccinate 30% of the population by end of August as the country continues to lag the vaccination rates in the region.

Outlook

Although the arrival of the Delta variant can potentially delay the country's exit from the pandemic, we remain optimistic long term as we believe the reopening will get back on track post the new mobility restrictions vis a vis increasing vaccination rates. Our sector preferences remain to be on cyclicals such as Financials and Real Estate. However, we remain cognizant of the global headwinds such as rising oil prices, a weaker currency and the prospect of higher interest rates.

Local bond yields for July were slightly lower as inflationary pressures from rising oil prices has abated after the OPEC and its allies have settled deals to increase output. July inflation printed at 4%, less than June's 4.1%, on base effects coupled with lower meat and transport prices. In this regard, we expect local inflation to continue to moderate for the second half of 2021. With local inflation finally within the Bangko Sentral ng Pilipinas' target range and the current flush liquidity environment, we expect the Monetary Board to keep both policy rates and Reserve Requirement Ratio (RRR) steady at its August 12 meeting. Against this backdrop, we will keep the neutral duration positioning vis-à-vis the benchmark as we continue to monitor the local and global developments.

The investment fund option for The Manufacturers Life Insurance Company's variable life insurance product is managed by Manulife Asset Management and Trust Corporation.

The Fund mentioned in this document is specific to variable life insurance contracts and is not considered a mutual fund. Yields depend on interest and foreign exchange rate levels, both of which may fluctuate. Other factors that affect yield include changes in the credit standing of the issuers and changes in the value of the stocks and dividends received. Further, investments of the Fund may provide that their values be determined based on prices or yields of other securities, instruments or foreign currencies, and such provisions may result in negative fluctuations in the value of these investments and, in turn, the Fund's yields. Thus, the performance of the separate account(s) is not guaranteed and the value of the policy could be less than the capital invested. THE VARIABLE LIFE POLICYHOLDER SHALL BEAR ALL INVESTMENT RISKS. Past performance of the Fund is not necessarily indicative of future performance. Yields are not guaranteed.

The information and/or analysis contained in this material have been compiled or arrived at from sources believed to be reliable but The Manufacturers Life Insurance Co. (Phils.), Inc. ("Manulife Philippines") does not make any representation as to their accuracy, correctness, usefulness or completeness and does not accept liability for any loss arising from the use hereof or the information and/or analysis contained herein. Information about the portfolio's holdings, asset allocation, or country diversification is historical and is not an indication of future portfolio composition, which will vary. Neither Manulife Philippines or its affiliates, nor any of their directors, officers or employees shall assume any liability or responsibility for any direct or indirect loss or damage or any other consequence of any person acting or not acting in reliance on the information contained herein.

The information in this material may contain projections or other forward-looking statements regarding future events, targets, management discipline or other expectations, and is only as current as of the date indicated. There is no assurance that such events will occur, and may be significantly different than that shown here. The information in this material including statements concerning financial market trends, are based on current market conditions, which will fluctuate and may be superseded by subsequent market events or for other reasons. This material was prepared solely for informational purposes and does not constitute a recommendation, professional advice, an offer, solicitation or an invitation by or on behalf of Manulife Philippines to any person to buy or sell any security. This material should not be viewed as a current or past recommendation or a solicitation of an offer to buy or sell any investment products or to adopt any investment strategy. Nothing in this material constitutes investment, legal, accounting or tax advice, or a representation that any investment or strategy is suitable or appropriate to your individual circumstances, or otherwise constitutes a personal recommendation to you. Past performance is not an indication of future results.

Manulife and the block design are registered service marks and trademarks of The Manufacturers Life Insurance Company and used by it and its affiliates including Manulife Financial Corporation.